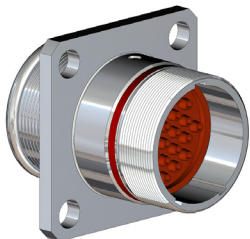
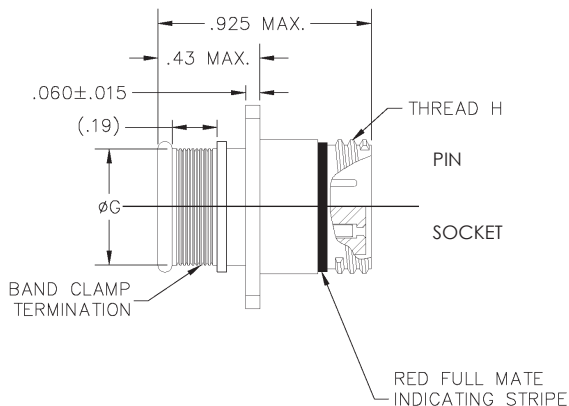


## H2DA2\* - 221



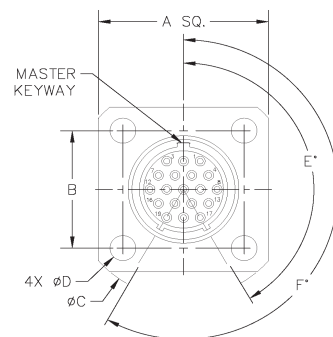
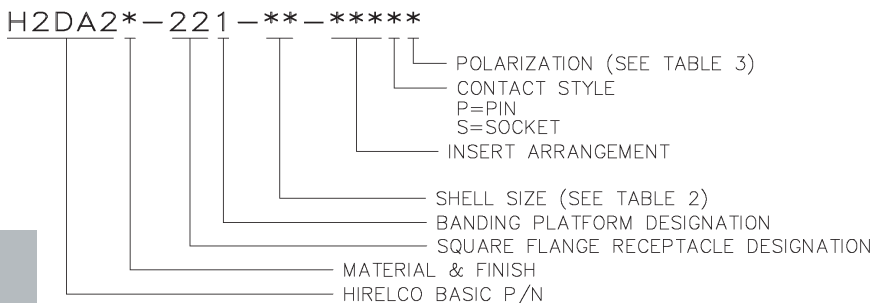
The HiRel H2DA2\*-221 High Density Square Flange Receptacle is designed with a double start ACME thread and a rear clamp band accessory. It has four holes that can be mounted and bolted to a panel. This H2D receptacle is available in shell sizes 5-21 with any of our standard insert arrangements as well as custom configurations.



Testing	
Operating Temperature	-65°C to +175°C
Random Vibration	37g
Shock	300G, half-sine, 3ms, 3 axes
Gunfire Vibration	37g

SHELL SIZE	A ±.015	B ±.015	ØC ±.015	ØD ±.003	ØG ±.015	THREAD H
05	.530	.363	.680	.093	.257	.3125-.05P-.1L-2A
06	.590	.423	.750		.309	.3750-.05P-.1L-2A
07	.650	.483	.850		.394	.4375-.05P-.1L-2A
08	.712	.545	.938		.429	.5000-.05P-.1L-2A
09	.850	.607	1.125		.491	.5625-.05P-.1L-2A
10	.890	.670	1.188	.128	.564	.6250-.05P-.1L-2A
13	1.030	.812	1.375		.651	.8125-.1P-.2L-2A
16	1.219	.981	1.625		.814	1.000-.1P-.2L-2A
17	1.280	1.060	1.700		.868	1.062-.1P-.2L-2A
21	1.430	1.205	1.938		1.116	1.3125-.1P-.2L-2A

MINOR KEY ANGLES		
POSITION	E°	F°
A (NORMAL)	150°	210°
B (ALTERNATE)	75°	210°
C (ALTERNATE)	95°	230°
D (ALTERNATE)	140°	275°
E (ALTERNATE)	75°	275°
F (ALTERNATE)	95°	210°

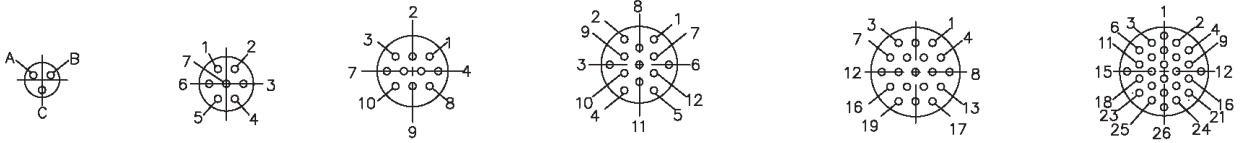


\* See "Classes/Finishes" table for exceptions

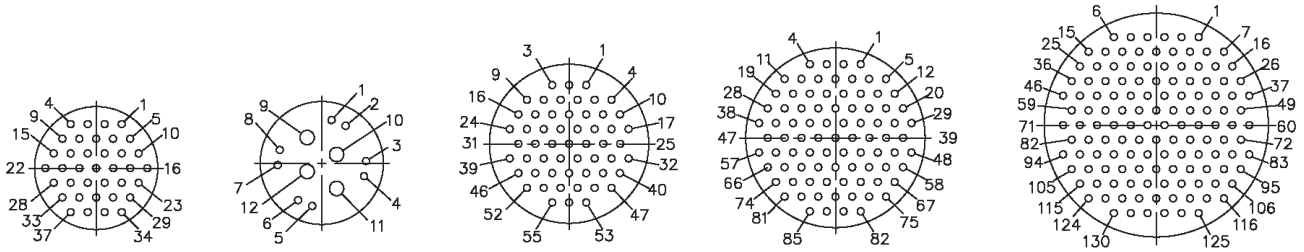
H2DA2\* - 221

## INSERT ARRANGEMENTS

Front face of pin insert engagement side shown. Socket insert is mirror image of pictured.



Insert Arrangement	05-003	06-007	07-010	08-013	09-019	10-026
No. of Contacts	3	7	10	13	19	26
Contact Size	#23	#23	#23	#23	#23	#23
DWV Voltage (VAC)	500	500	500	500	500	500
Current Rating (Amps)	5	5	5	5	5	5



Insert Arrangement	13-037	13-048	16-055	17-085	21-130
No. of Contacts	37	4	8	55	130
Contact Size	#23	#16	#23	#23	#23
DWV Voltage (VAC)	500	1800	500	500	500
Current Rating (Amps)	5	13	5	5	5

## CONTACTS



**Contact Pin:**

Size 23

**Contact Socket:**

Size 23

0009-047-000 (22-24 AWG Wire)	0012-049-000 (22-24 AWG Wire)
0009-114-000 (26-28 AWG Wire)	0012-287-000 (26-28 AWG Wire)

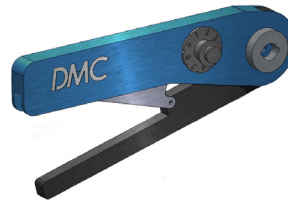
## CLASSES/FINISHES

Class	Material	Finish
C	Al	Anodize Black**
F	Al	Low Stress Nickel**
W	Al	Olive Drab Cadmium over Nickel
T	Al	Nickel Teflon
Z	Al	Zinc Nickel
B	Ti	Nickel**
K	Cres	Passivated**

For Space Grade Applications, add a "1" after the Class.  
Ex: Space Grade Titanium with Nickel plating = B1

\*\* Operating Temperature -65°C to +200°C

## TOOLS



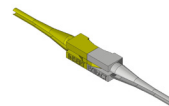
**Crimp Tool:**

Daniels P/N AFM-8  
(M22520/2-01)



**Positioner:**

Daniels P/N K-710A (Socket)  
Daniels P/N K-709A (Pin)



**Insertion / Extraction Tool:**

P/N 08AT024-23 (Size 23)

For hermetic connectors, alternate insert arrangements or connectors with size #16 contacts, please consult factory for more information.